



GAT MONTHLY MEMBERSHIP PROGRESS REPORT

Results as of: 11/30/2020

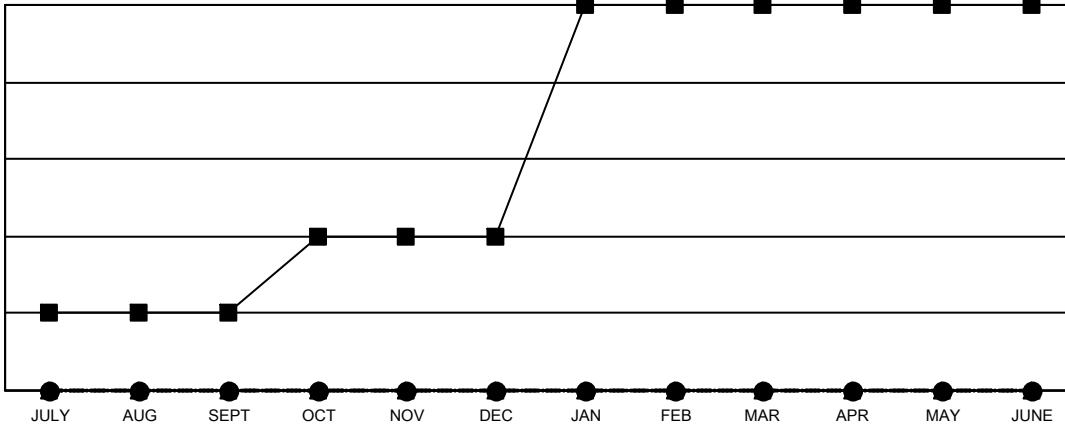
Multiple District 24

LOCATION: VIRGINIA

| Clubs | | | |
|-----------------------|---------------|-----------|---------------|
| RESULTS FOR 2020-2021 | | | |
| QUARTER | NEW CLUB GOAL | NEW CLUBS | DROPPED CLUBS |
| JULY/AUG/SEPT | 1 | 0 | 4 |
| OCT/NOV/DEC | 1 | 0 | 0 |
| JAN/FEB/MAR | 3 | 0 | 0 |
| APR/MAY/JUNE | 0 | 0 | 0 |

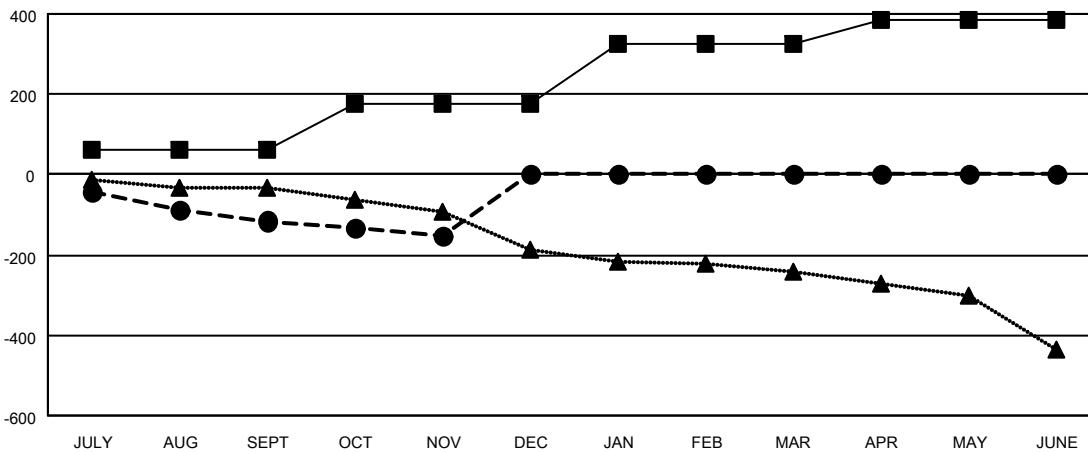
| Members | | | |
|-----------------------|------------------------|----------------------|--|
| RESULTS FOR 2020-2021 | | | |
| QUARTER | MEMBER GROWTH NET GOAL | MEMBER GROWTH ACTUAL | DROPPED MEMBERS ACTUAL (including transfers) |
| JULY/AUG/SEPT | 60 | 91 | 182 |
| OCT/NOV/DEC | 115 | 86 | 113 |
| JAN/FEB/MAR | 150 | 0 | 0 |
| APR/MAY/JUNE | 60 | 0 | 0 |

GOALS AND ACTUAL NEW CLUBS CUMULATIVE



- - CURRENT YEAR GOALS FOR NEW CLUBS
- - CURRENT YEAR ACTUAL NEW CLUBS
- ▲ - LAST YEAR ACTUAL NEW CLUBS

GOALS AND ACTUAL MEMBERS CUMULATIVE



- - MEMBER GROWTH NET GOAL
- - MEMBER GROWTH ACTUAL
- ▲ - LAST YEAR MEMBERSHIP ACTUAL

| | | |
|------------------------|---|--|
| DROPPED CLUBS: 4 | 56 CLUBS OF 255 ADDED 1 OR MORE NEW MEMBERS | <u>GENDER DISTRIBUTION</u> |
| | | MALE 3,956 (65.57%) FEMALE 2,077 (34.43%) |
| <u>DROPPED MEMBERS</u> | CLICK HERE FOR CUMULATIVE MEMBERSHIP DATA | TOTAL FAMILY UNIT MEMBERS 1,064 |
| DECEASED 48 | | FAMILY MEMBERS PAYING HALF DUES 537 |
| CLUB CANCELLED 26 | | |
| OTHER 221 | | |
| TOTAL 295 | | |